

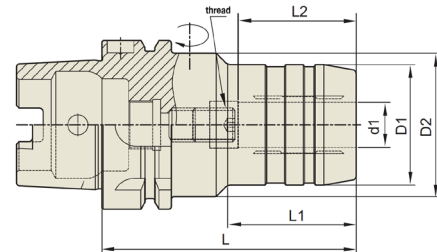
HSK63A High Precision Hydraulic Holders



Features

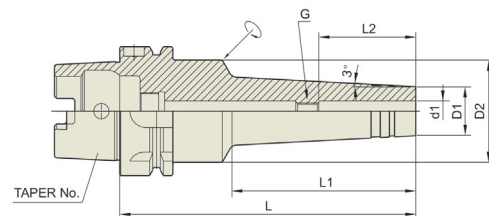
- *Balanced to 25,000 RPM at G2.5*
- *T.I.R. 0.0001" measured at 3X shank diameter*
- *Taper precision ground to AT3 standard*
- *AD coolant-thru is standard*

Hydraulic Chucks provide powerful, vibration-free cutting in all materials. Hydros are a good choice when you need T.I.R. of 0.0001" and high holding power. Use cutting tools with a H6 shank tolerance.



HSK63A Hydraulic Toolholders – Inch and Metric

Part No.	Description	d1	D1	D2	L	L1	L2	Thread
157250	HSK63A-HC 1/4-70 Hydro	1/4"	1.024"	1.969"	2.756"	0.945"	1.063"	M5x0.8
157500	HSK63A-HC 1/2-85 Hydro	1/2"	1.260"	1.969"	3.346"	1.575"	1.457"	M10x1.0
157750	HSK63A-HC 3/4-90 Hydro	3/4"	1.654"	1.969"	3.543"	1.890"	1.654"	M16x1.0
157100	HSK63A-HC 1-4.72 Hydro	1.0"	2.244"	2.480"	4.724"	2.323"	1.890"	M16x1.0
157125	HSK63A-HC 1.1/4-4.92 Hydro	1 1/4"	2.520"	2.953"	4.921"	2.480"	2.165"	M16x1.0
157060	HSK63A-HC 6-70 Hydro	6mm	26mm	50mm	70mm	24mm	27mm	M5x0.8
157080	HSK63A-HC 8-70 Hydro	8mm	28mm	50mm	70mm	25mm	27mm	M6x1.0
157010	HSK63A-HC 10-80 Hydro	10mm	30mm	50mm	80mm	35mm	32mm	M8x1.0
157012	HSK63A-HC 12-85 Hydro	12mm	32mm	50mm	85mm	-	37mm	M10x1.0
157014	HSK63A-HC 14-85 Hydro	14mm	34mm	50mm	85mm	40mm	37mm	M10x1.0
157016	HSK63A-HC 16-90 Hydro	16mm	38mm	50mm	90mm	46mm	42mm	M12x1.0
157018	HSK63A-HC 18-90 Hydro	18mm	40mm	50mm	90mm	47mm	42mm	M12x1.0
157200	HSK63A-HC 20-80 Hydro	20mm	53mm	53mm	80mm	-	42mm	M16x1.0
157020	HSK63A-HC 20-90 Hydro	20mm	42mm	50mm	90mm	48mm	42mm	M16x1.0
157025	HSK63A-HC 25-120 Hydro	25mm	57mm	63mm	120mm	54.5mm	48mm	M16x1.0
157032	HSK63A-HC 32-125 Hydro	32mm	64mm	75mm	125mm	63mm	55mm	M16x1.0



HSK63A-HMC Hydraulic Toolholders – Inch

Part No.	Description	d1	D1	D2	L	L1	L2	Thread
158250	HSK63A-HMC 1/4"-5.71 Hydro	1/4"	0.787"	1.969"	5.709"	3.543"	1.063"	M5x0.8
158312	HSK63A-HMC 5/16"-5.71 Hydro	5/16"	0.866"	1.969"	5.709"	3.543"	1.063"	M6x1.0
158375	HSK63A-HMC 3/8"-5.71 Hydro	3/8"	0.945"	1.969"	5.709"	3.543"	1.260"	M8x1.0
158500	HSK63A-HMC 1/2"-5.71 Hydro	1/2"	1.024"	1.969"	5.709"	3.543"	1.457"	M10x1.0
158625	HSK63A-HMC 5/8"-5.7 Hydro	5/8"	1.260"	1.969"	5.709"	3.543"	1.654"	M12x1.0
158750	HSK63A-HMC 3/4"-5.7 Hydro	3/4"	1.339"	1.969"	5.709"	3.543"	1.654"	M16x1.0